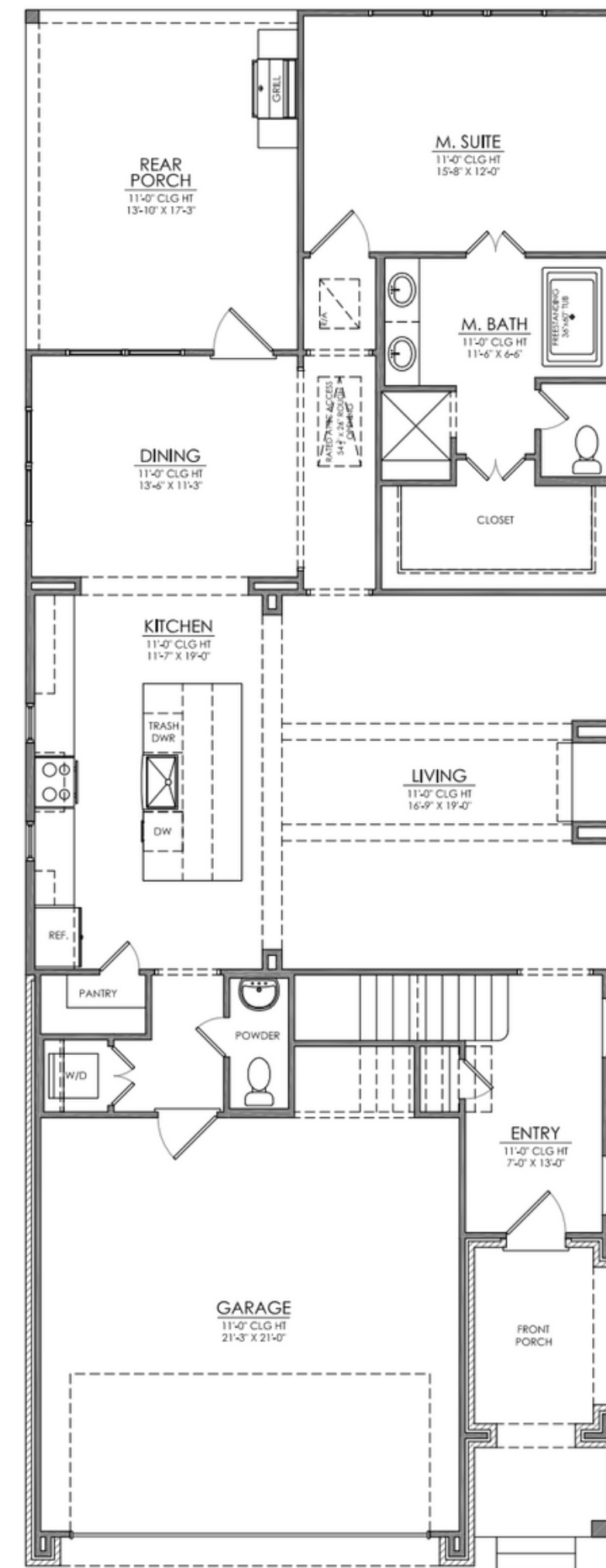
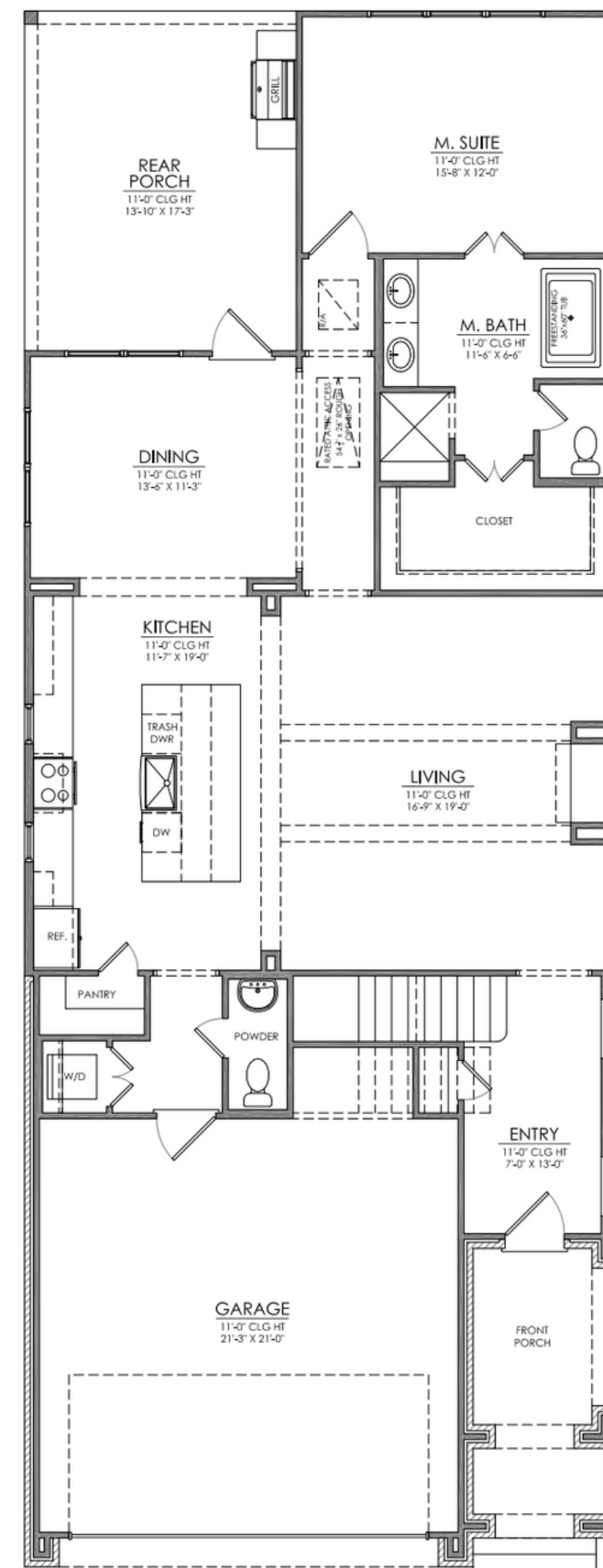
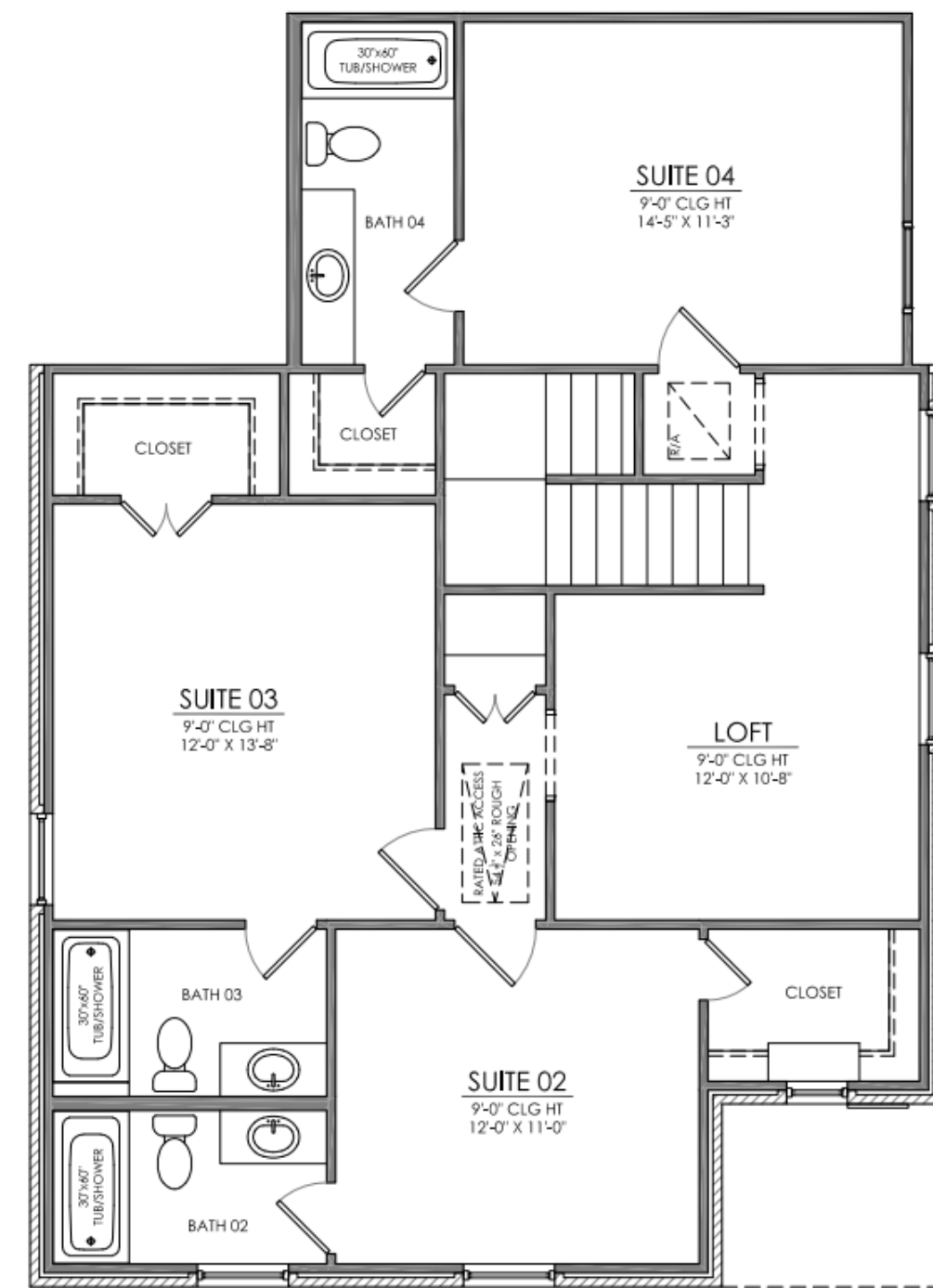


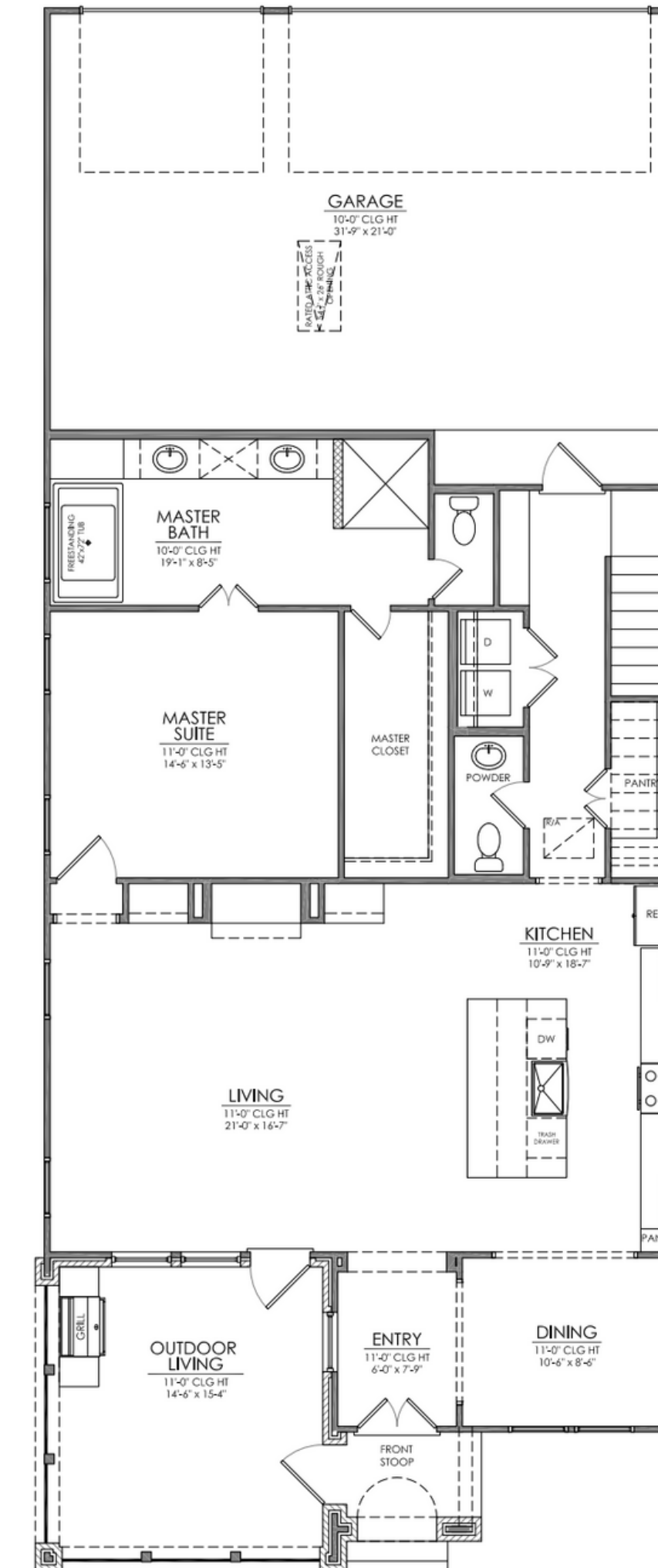
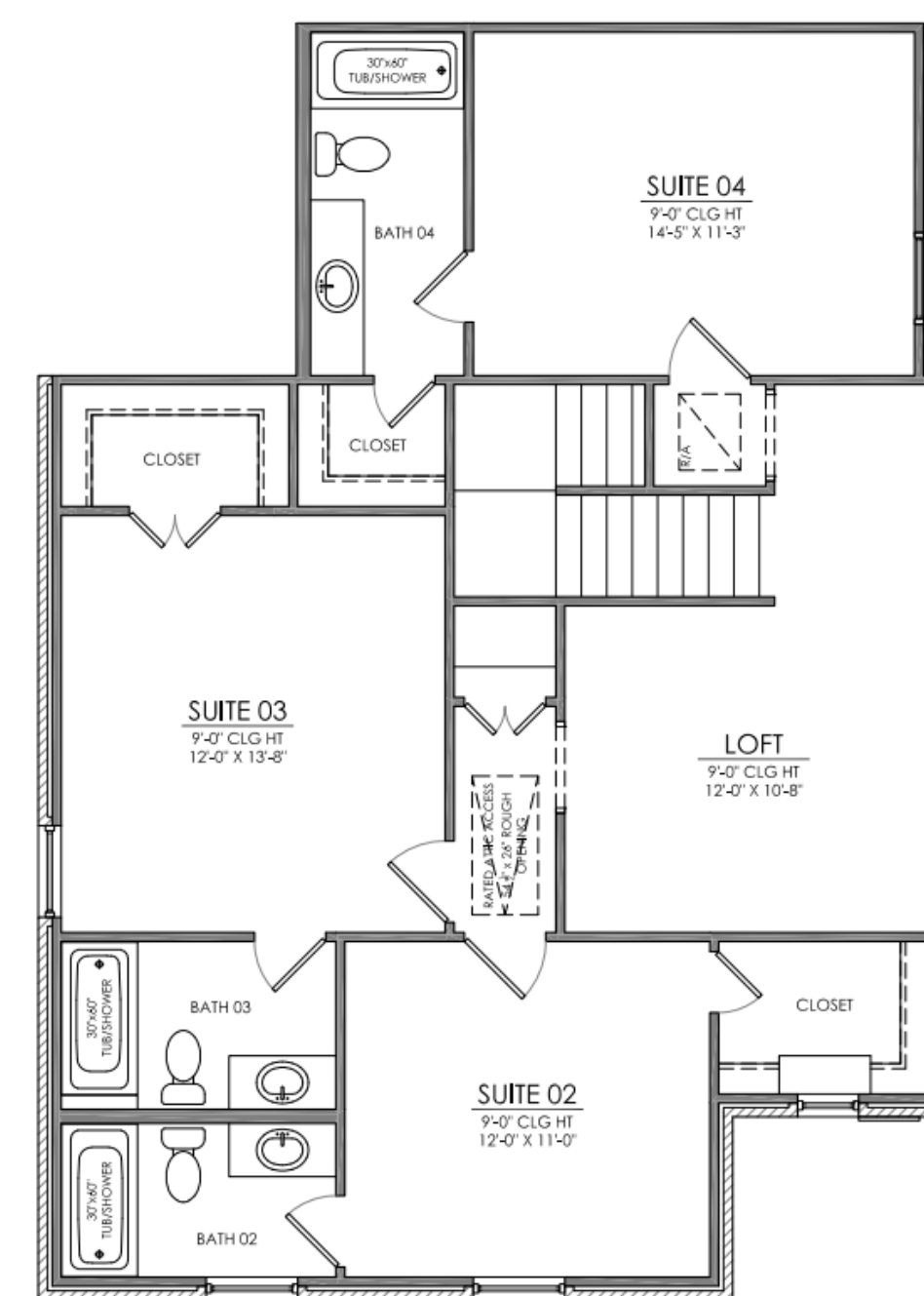
FLOOR PLANS



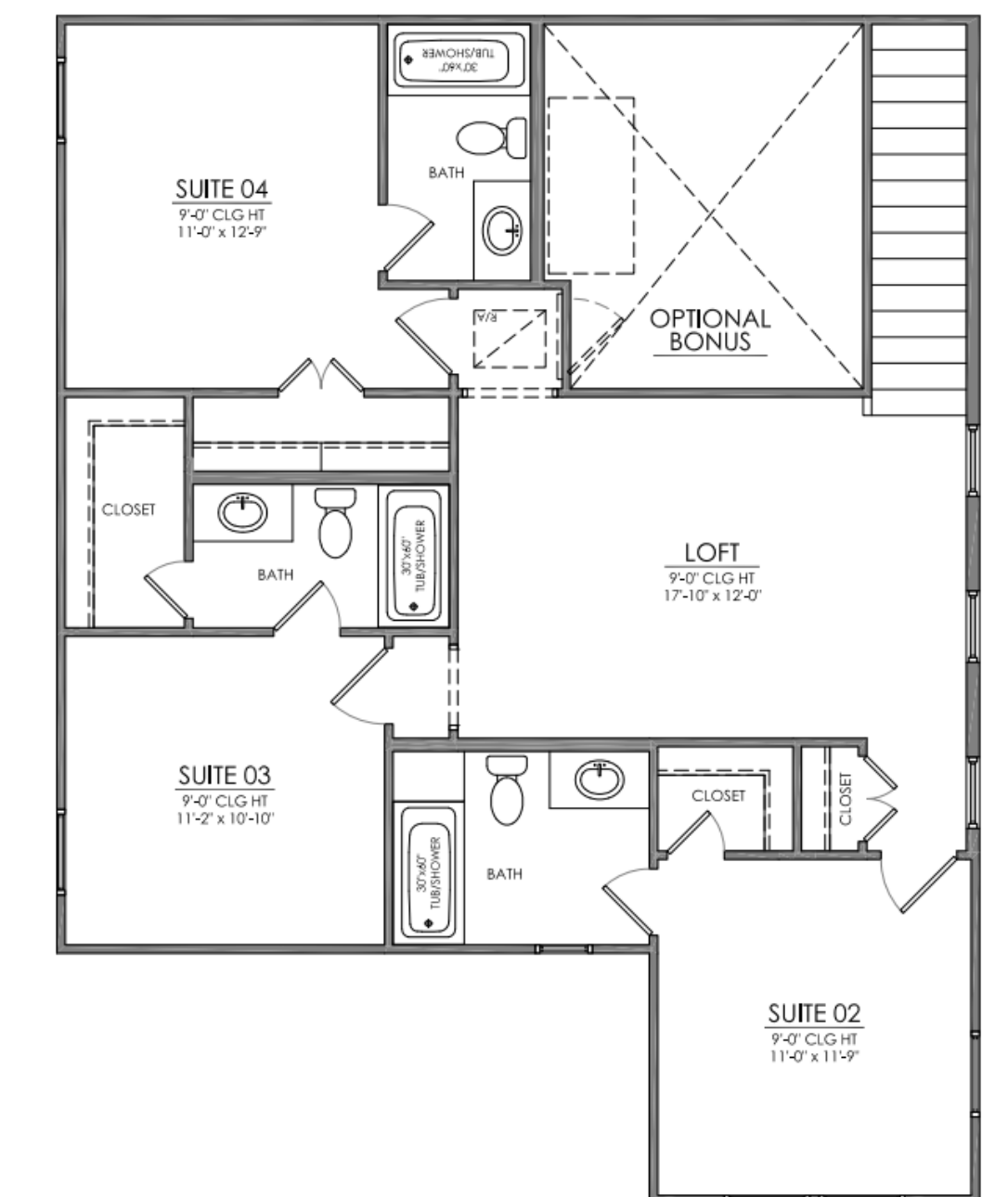
MIRIMAR A
 • 2582 SQFT
 • 4 BED / 4.5 BATH
 • LOFT



MIRIMAR B
 • 2582 SQFT
 • 4 BED / 4.5 BATH
 • LOFT



GRAYTON
 • 2444/2591 SQFT
 • 4 BED / 4.5 BATH
 • LOFT
 • BONUS (OPTIONAL)



ALL INFORMATION DEEMED RELIABLE BUT IS NOT GUARANTEED AND SUBJECT TO CHANGE WITHOUT NOTICE. PLANS, ORIENTATION & FINISHES SUBJECT TO CHANGE. ALL MEASUREMENTS AND SQUARE FOOTAGE ARE APPROXIMATE. IMAGES ARE TO SHOW GENERAL LOOK - PARTICULAR DETAILS WILL VARY.